



Comfort, perfected.

ODU Motherboard Compatibility Setup Guide



WARNING

Disconnect all power to unit before installing or servicing. More than one disconnecting switch may be required to de-energize the equipment. Hazardous voltage can cause server personal injury or death.

ALL phases of this installation must comply with NATIONAL, STATE AND LOCAL CODES

	Parts Name / Model	Ecoer code	Product Series				
			Ecoer Decades	Ecoer Decades Extreme	Ecoer TDi Pro	Ecoer TDi Pro 2	Ecoer TDi Select 2
ODU	Motherboard component(2436) / EODA18H-2436	EAC230904156	√				
	Motherboard component(4860) / EODA18H-4860	EAC230904157	√				
	Motherboard component(2436) / EODA18H-2436BAA	EAC230904158		√			
	Motherboard component(4860) / EODA18H-4860BAA	EAC333010000005		√			
	Motherboard component(2436) / EODA19H-2436AAA	EAC230904165/ EAC230904173	√ ¹	√ ²	√ ³		
	Motherboard component(4860) / EODA19H-4860AAA	EAC230904166/ EAC230904171	√ ¹	√ ²	√ ³		
	Motherboard component(2346)/ EODA19H-2436ABA EODA17H-2436ADA	57131200000017	√ ¹	√ ²	√ ³	√ ^{4/10}	√ ⁷
	Motherboard component(4860)/ EODA19H-4860ABA EODA17H-4860ADA	57131200000016	√ ¹	√ ²	√ ³	√ ^{4/10}	√ ⁷

NOTES:

"√¹": Set n18=1 for Ecoer Decades series (EODA18H-2436, EODA18H-4860).

"√²": Set n18=2 for Ecoer Decades Extreme series (EODA18H-2436BAA, EODA18H-4860BAA).

"√³": Set n18=3 for Ecoer TDi Pro series (EODA19H-2436AAA, EODA19H-4860AAA)

"√^{4/10}": For Ecoer TDi Pro 2 series (EODA19H-2436ABA, EODA19H-4860ABA) produced **before 2026.1.1**, set n18 = 4.

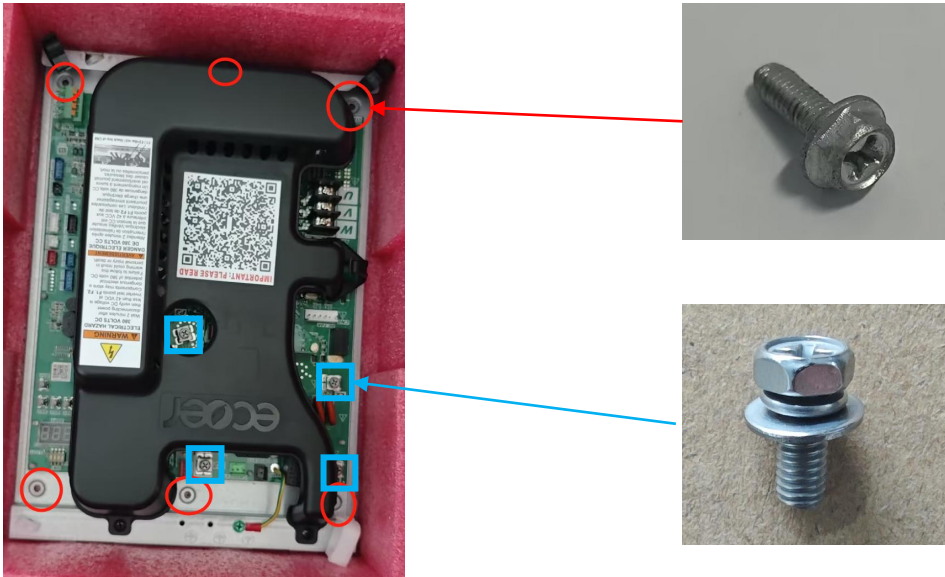
For units produced **after 2026.1.1**, set n18 = 10.

"√⁷": Set n18=7 for Ecoer TDi Select 2 series (EODA17H-2436ADA, EODA17H-4860ADA)

When using a compatible motherboard to replace the previous motherboard, please follow the steps below for setup:

Step 1: Power off the outdoor unit and disconnect the power source. Wait for at least 30 seconds to ensure the discharge of any residual electricity on the motherboard before proceeding with the following operations.

Step 2: Remove the cables and screws from the original motherboard and remove the original motherboard. (Make sure to keep the 6 installation screws that were removed for future use)



Step 3: Reconnect the cables and fix the motherboard. Make sure the wiring is correct. Note that the screws in the red and blue frames are different, do not mix the screws.

Step 4: Please proceed with the appropriate settings based on the installed series or model:

Product Series	Model	HPS	Dip Switch	Image
Ecoer Decades	EODA18H-2436, EODA18H-4860	×	ON	Figure 1
Ecoer Decades Extreme	EODA18H-2436BAA, EODA18H-4860BAA	×	ON	Figure 1
Ecoer TDi Pro	EODA19H-2436AAA, EODA19H-4860AAA	√	1	Figure 2
Ecoer TDi Pro 2	EODA19H-2436ABA, EODA19H-4860ABA	√	1	Figure 2
Ecoer TDi Select 2	EODA17H-2436ADA, EODA17H-4860ADA	√	1	Figure 2

The yellow-colored HPS port does not require any wiring.

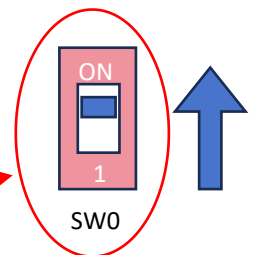
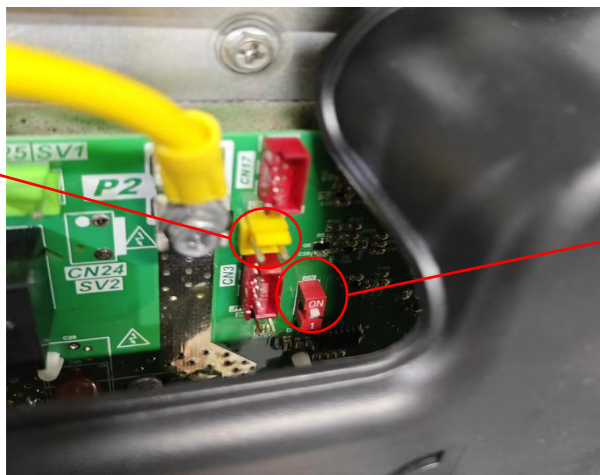


Figure 1

The yellow-colored HPS port is connected to the corresponding cable.

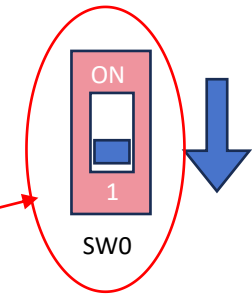
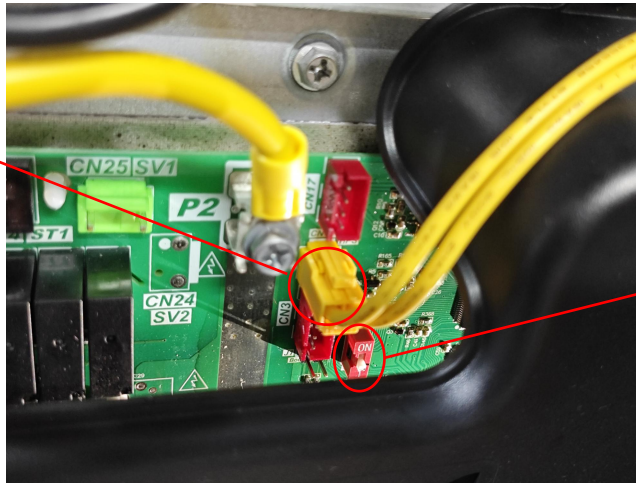
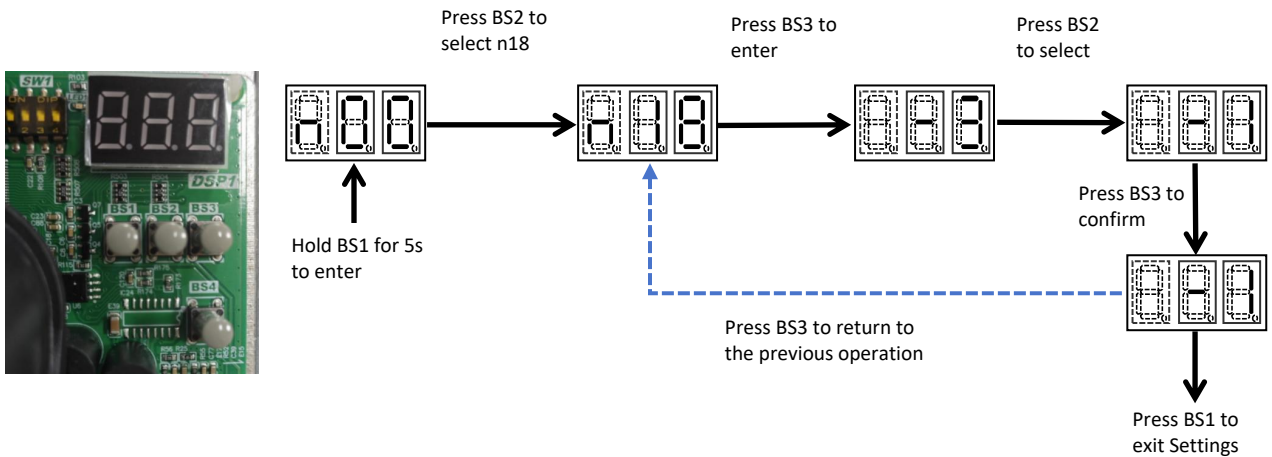


Figure 2

Step 5: Power on the outdoor unit and keep it in standby mode (do not send any startup commands). Ensure proper wiring of the motherboard before system power-up.

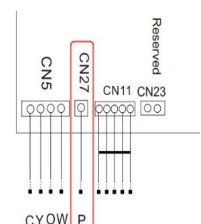
Step 6: Please follow the steps shown in the diagram and perform the appropriate settings based on the installed series or model:

Product Series		Model	Set N18
Ecoer Decades		EODA18H-2436, EODA18H-4860	1
Ecoer Decades Extreme		EODA18H-2436BAA, EODA18H-4860BAA	2
Ecoer TDi Pro		EODA19H-2436AAA, EODA19H-4860AAA	3
Ecoer TDi Pro 2	Produced before 2026.1.1	EODA19H-2436ABA, EODA19H-4860ABA	4
	Produced after 2026.1.1		10
Ecoer TDi Select 2		EODA17H-2436ADA, EODA17H-4860ADA	7



Step 7: After completing the above setup, please perform a normal operational check on the device to ensure it is running properly.

Special Note: The **P terminal** is an additional protection function for A2L refrigerant leakage. When used on the R-410A refrigerant system, there is no need to connect the P terminal.



©2026 ECOER INC.

4040 McDermott Road, Suite 200
Plano, Texas 75024

Tel: 703-348-2538

www.ecoer.com

