



R454b SDi Extreme2 Series Specifications

Contents

1. Nomenclature- - - - -	2
2. Dimensions- - - - -	5
3. Product Specifications- - - - -	6
4. Fan Performance - - - - -	7



■ Standard Features

- Multi-position installation: horizontal(left or right), vertical(up or down)
- Aluminum Coil
- Constantly Air Flow system up to 0.80 In.W.G
- 1-inch R4.2 fiberglass free insulation reduces condensation and boosts efficiency(optional)
- Optional Auxiliary heat kit up to 25kW
- Easy Maintenance
- Adaptive Control System
- Chassis heater and crankcase heater equipped as standard



1. Nomenclature

1.1 Indoor Unit

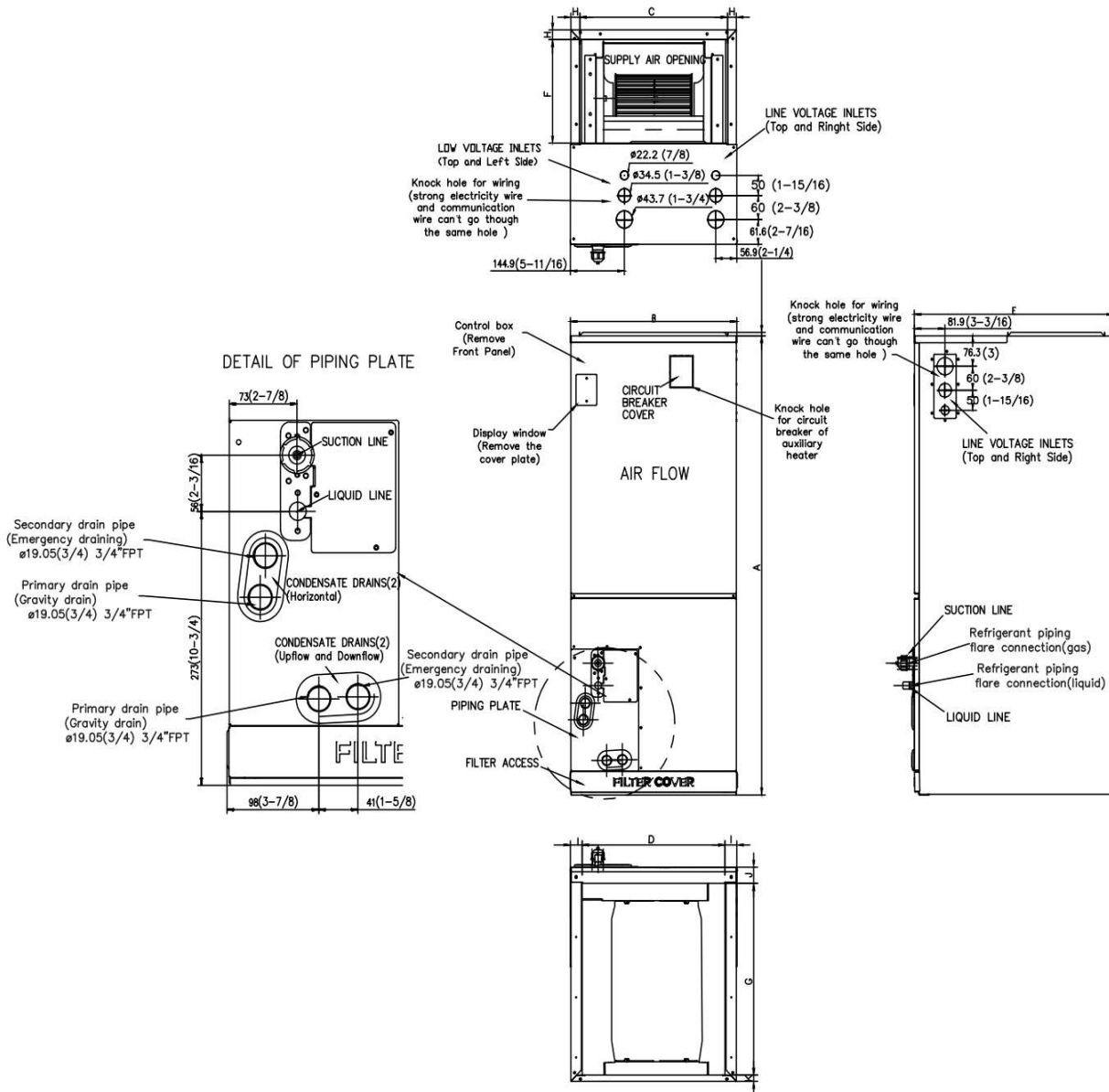
	E	AH	D	E	C	- 36	A	B	A
	1	2	3	4	5	6	7	8	9
Brand E: Ecoer									
Product AH: Air Handler FC: Fan Coil									
Power D: 208/230V 60Hz 1Ph & 115V 60Hz 1Ph									
Metering device E: EEV									
Control Method N: 24V Non-Communicating C: Communicating									
Capacity 36=3Ton 60=5Ton									
Series A, B, C etc.									
Refrigerant B: R454B									
Revisions A, B, C etc.									

1.2 Outdoor Unit

	E	S	C	A	17	H -	36	A	B	A
	1	2	3	4	5	6	7	8	9	10
Brand	E: Ecoer									
Product	S: Side discharge outdoor unit									
Product	C: Air conditioner									
Power	A: 208/230V-1Ph-60Hz									
SEER2	17: 17SEER2 Series									
Type	H: Heat Pump C: Air Conditioner									
Capacity	36=3Ton 60=5Ton									
Series	A, B, C etc. U: Ultra Heating									
Refrigerant	A: R410A B: R454B									
Revisions	A, B, C etc.									

2. Dimensions

2.1 Indoor Unit Dimension

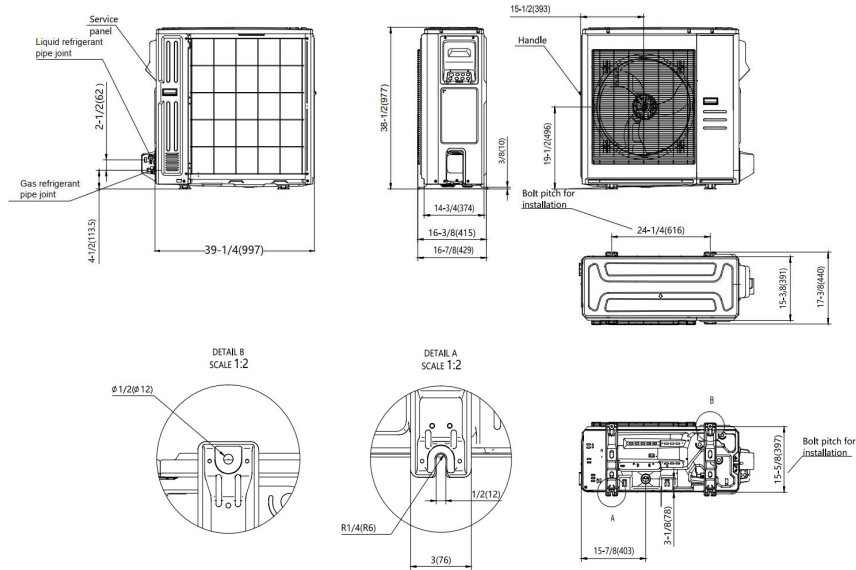


Model	W (inch)	D (inch)	H (inch)	Net Weight (lbs.)	Gross Weight (lbs.)
EAHDEC-36ABA	21.02	21.02	49.02	129.41	153.88
EAHDEC-60ABA	21.02	24.49	52.99	162.92	190.92

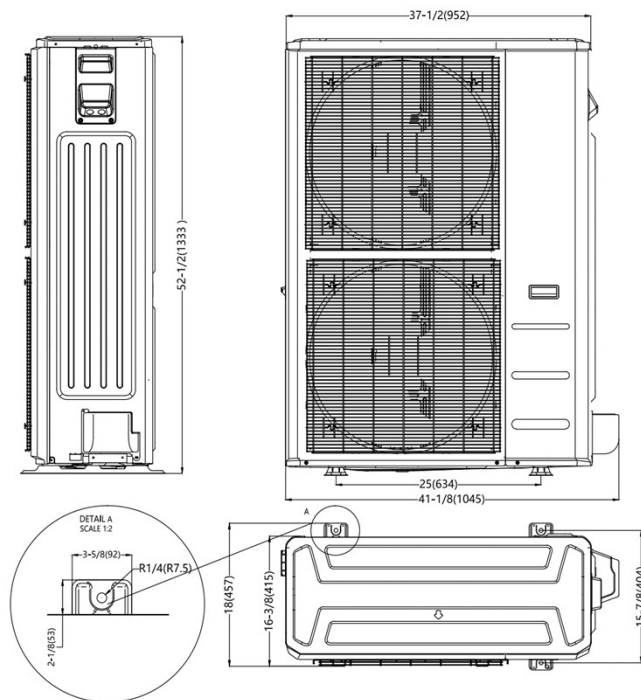
2. Dimensions

2.2 Outdoor Unit Dimension

ESCA17H-36ABA



ESCA17H-60ABA



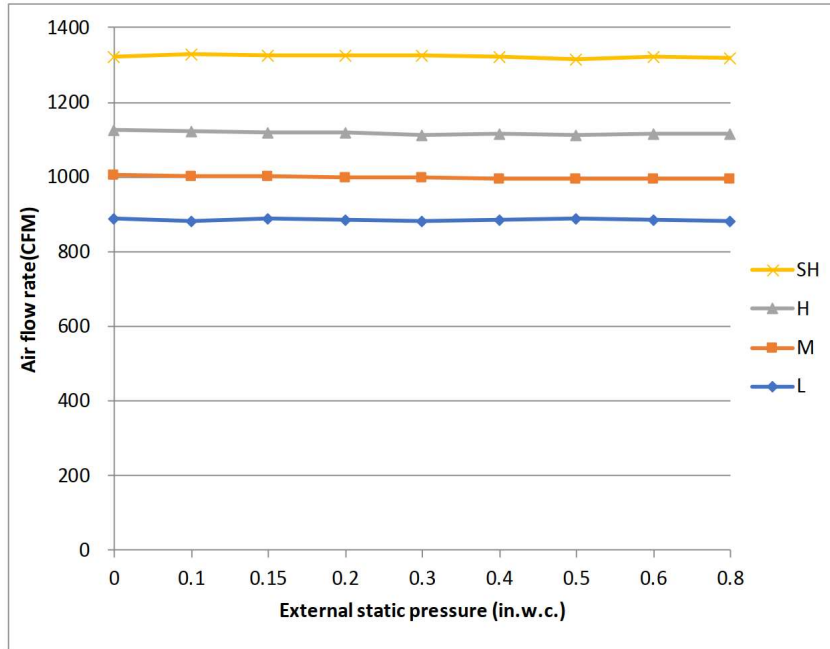
Model	W (inch)	D (inch)	H (inch)	Net Weight (lbs.)	Gross Weight (lbs.)
ESCA17H-36ABA	38.58	16.34	38.39	204.15	235.23
ESCA17H-60ABA	37.48	16.34	52.48	242.95	275.13

3. Product Specifications

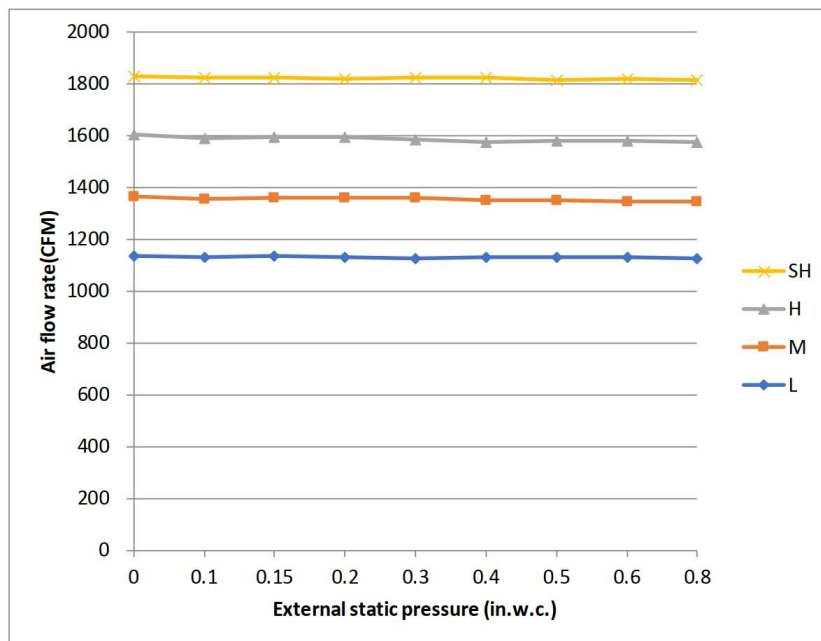
Model	ESCA17H-36ABA EAHDEC-36ABA		ESCA17H-60ABA EAHDEC-60ABA	
INDOOR UNIT				
Indoor Air Flow (Turbo/H/M/L/Si) (CFM)	1189.0 / 1083.0 / 971.2 / 865.2		1807.0 / 1583.3 / 1359.7 / 1136.0	
Indoor Noise Level (dBA)	49/48.0/45.5/25.5		54.5/52/49.5/34.5	
Dimension (W×D×H)	inch	21.02 x 21.02 x 49.02	21.02 x 24.49 x 52.99	
	mm	534.0×534.0×1245.0	534.0×622.0×1346.0	
Package (W×D×H)	inch	26.57 x 24.41 x 52.56	27.95 x 26.77 x 56.50	
	mm	675×620×1335	710×680×1435	
Net/Gross Weight	lbs.	129.41/153.88	162.92/190.92	
	kg	58.7/69.8	73.9/86.6	
OUTDOOR UNIT				
Compressor Type	TWIN-ROTARY		TWIN-ROTARY	
Compressor Model	EKPQ420D1UMUA		ETPQ480D66UMU1	
Refrigerant	R454B		R454B	
Refrigerant Oil Charge(mL)	1460		1300	
Refrigerant Oil	VG75		VG75	
Outdoor Air Flow (Max) (CFM)	3001.8		2648.6	
Outdoor Noise Level (dBA)	62.5		65	
Dimension (W×D×H)	inch	38.58 x 16.34 x 38.39	37.48 x 16.34 x 52.48	
	mm	980.0×415.0×975.0	952.0×415.0×1333.0	
Package (W×D×H)	inch	45.08 x 19.68 x 42.52	43.11 x 19.49 x 58.27	
	mm	1145×500×1080	1095×495×1480	
Net/Gross Weight	lbs.	204.15/235.23	242.95/275.13	
	kg	92.6/106.7	110.2/124.8	
ELECTRICAL				
Indoor Power Supply	115/208/230V,60Hz,1Ph		115/208/230V,60Hz,1Ph	
Indoor MCA 115V/(208/230V)	8.0/6.0		14.5/11.0	
Indoor MOP	15		15	
Outdoor Power Supply	208/230V,60Hz,1Ph		208/230V,60Hz,1Ph	
Outdoor MCA	29		40	
Outdoor MOP	30		40	
Communication Wiring	AWG 20-2		AWG 20-2	
Compressor RLA	20.5		31	
Outdoor Fan Motor RLA	2.4		1.2	
Outdoor Fan Motor W	250		85	
Indoor Fan Motor RLA	4.5		8.3	
Indoor Fan Motor W	375		750	
System Power Input @ Cooling (W)	3076(820 ~ 4440)		5400(1540 ~ 6430)	
System Power Input @ Heating (W)	3012(665 ~4370)		5300(725 ~5970)	
PIPING				
Throttle type(Indoor)	EXV		EXV	
Throttle type(Outdoor)	EXV		EXV	
Liquid Size	9.52mm(3/8in)		9.52mm(3/8in)	
Gas Size	19mm(3/4in)		19mm(3/4in)	
Max. Piping Length(ft/m)	246(75)		246(75)	
Max. Height Difference(ft/m)	98.4(30)		98.4(30)	
Max. Pre-charged Length(ft/m)	24.6(7.5)		24.6(7.5)	
Refrigerant Pre-charged Amount(oz/kg)	126.99(3.6)		183.42(5.2)	
Additional Charge of Refrigerant((oz/ft)/(g/m))	0.7(65)		0.7(65)	
Connection Method	Flared		Flared	
EFFICIENCY				
SEER2	17.4		16.0	
EER2	11.7		10.0	
HSPF2-4	10.2		9.0	
COP	3.60		3.10	

4. Fan Performance

ESCA17H-36ABA+EAHDEC-36ABA



ESCA16H-60BBA+EAHDEC-60ABA



©2025 ECOER INC.

4040 McDermott Road, Suite 200
Plano, Texas 75024
Tel: 703-348-2538

www.ecoer.com