



TAG:

SUBMITTAL

Multi-position Air Handler EAHDEC-36ABA

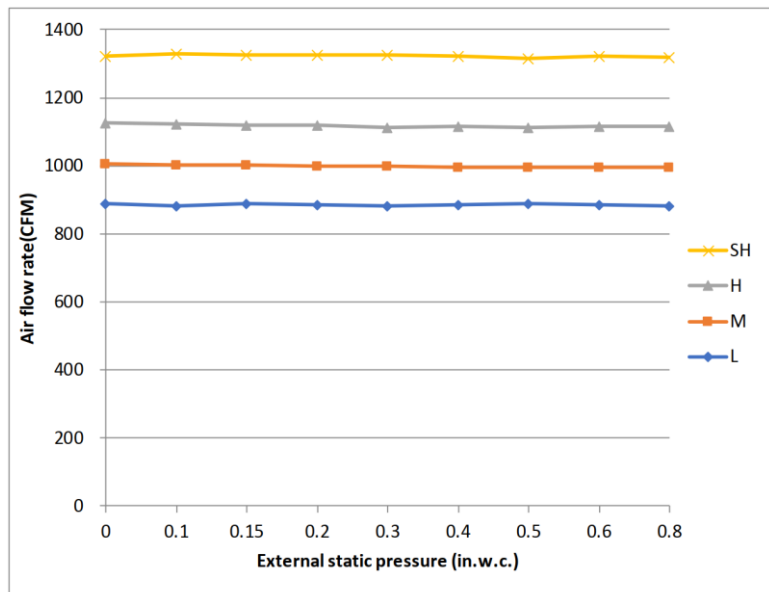


Product Specifications

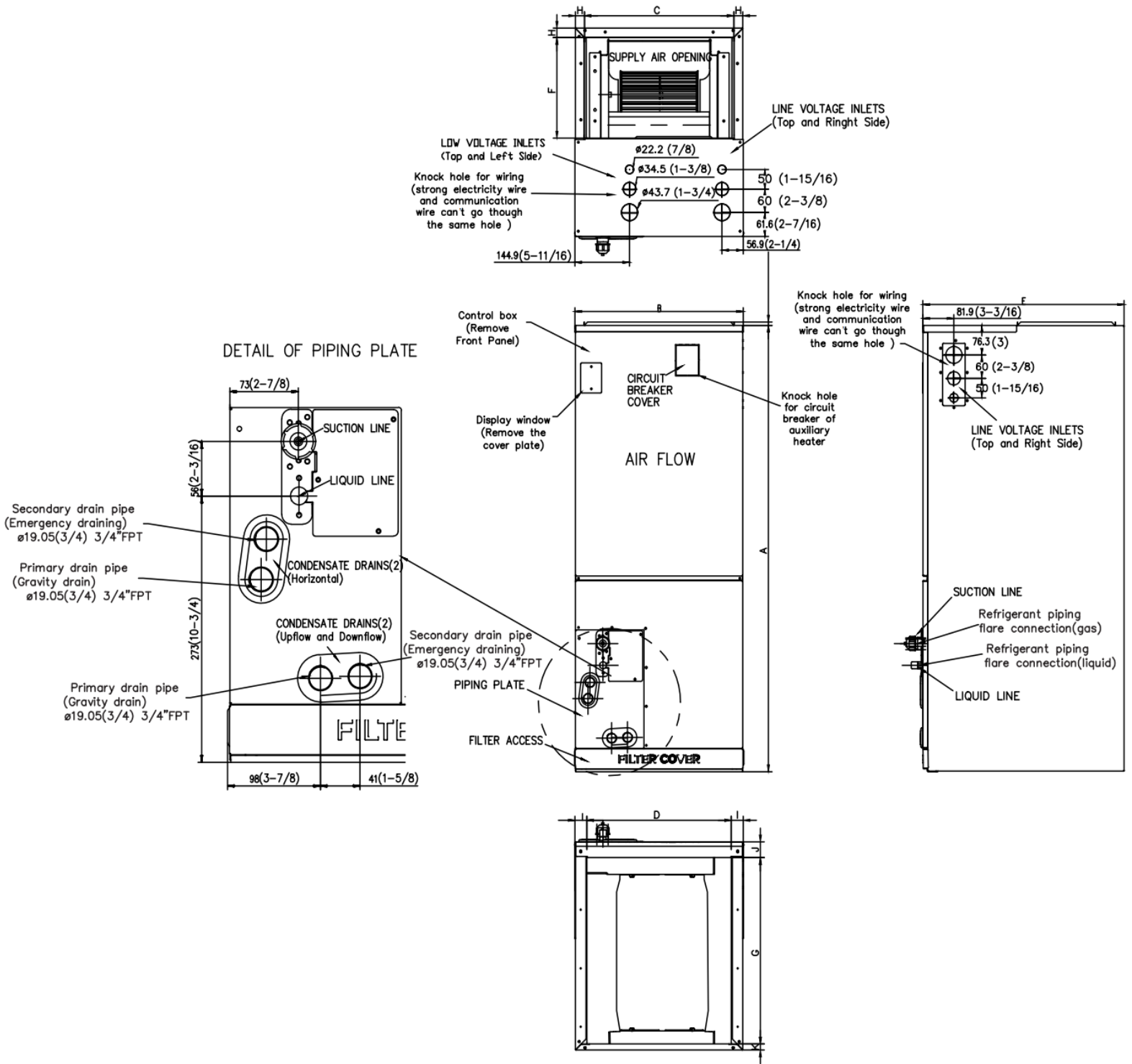
INDOOR UNIT	EAHDEC-36ABA
Voltage-Phase-Hz	208/230-1-60, optional 115V*
Minimum Circuit Amps.	8.0/6.0
Indoor Coil Type	Aluminum Coil
Refrigerant Control	EEV
Dehumidification (kg/h)	3.4
Duct Connections	See Outline Drawing
Fan Motor Type	ECM
CFM vs. in. W.G	See Fan Performance
RLA	4.5
ESP range (in.wg.)	0-0.8
Indoor air flow (H/M/L) (CFM)	1189.0 / 1083.0 / 971.2 / 865.2
Indoor noise level (H/M/L)[dB(A)]	49/48.0/45.5/25.5
Refrigerant	R-454B
Ref. Pipe Connections	Flared
Liquid Pipe Size (in. O.D.)	3/8
Gas Pipe Size (in. O.D.)	3/4
Dimensions (W X H X D)	21.02 x 49.02 x 21.02
Net Weight (LBS)	129.41
Shipping Weight (LBS)	153.88

*If the indoor unit requires a 115V power supply, wiring adjustments must be made on-site. Please refer to the installation manual for details.

Fan Performance



AHU Dimension



AHU Dimension

Dimensions		36K	
		inch	mm
A	Height	49	1245
B	Width	21	534
C	Supply Air Opening Width	19-1/8	486
D	Return Air Opening Width	18-5/8	473
E	Depth	21	534
F	Supply Air Opening Depth	10-1/4	260
G	Return Air Opening Depth	18-3/4	476
H	Supply Air Opening Clearance	15/16	24
I	Return Air Opening Side Clearance	1-1/4	32
J	Return Air Opening Front Clearance	1-5/8	41
K	Return Air Opening Back Clearance	5/8	16

Mechanical Specifications

Full Multi-position installation

This Air Handling Unit (AHU) has the ability to be configured in upflow, downflow, horizontal left, or horizontal right orientations.

Installation Convenience

It simplifies the airflow volume adjustment process and significantly reduces installation efforts, which saves lots of time and therefore reduces labor cost compared to traditional manual adjustment.

Easy Fault Code Checking

- With advanced mutual data communication technology, the AHU system can automatically identify the cause of failure and produce a relevant code.
- Installer or user can easily check the fault code displayed on the electric function board by just opening the lid.
- It helps service proactively determine the failure cause, prepare for repairing parts ahead of field maintenance work, greatly improve the work efficiency.

Nitrogen Charge and Leakage Check Valve

Ecoer SDi R454B AHU is standard with Nitrogen injection to maintain positive pressure of the indoor unit. It is easily to check from the check valve whether there is leakage in the evaporator or not.

Automatic Airflow Adjustment

When the dust filter or evaporator gets clogged with dust during the operation, the system load and motor torque increase. The unit's MPU (microprocessor) can detect this change and adjust the fan speed to maintain a stable CFM.

