

# Ducted Style Heat Pump Ductless System

Indoor Model: **DLFSDAH18XAK**

## Submittal Data

Job Data:  Location:

Buyer:  Buyer P.O. #:  Carrier #:

Unit Number:  Model Number:

Performance Data Certified By:  Date:



### STANDARD FEATURES

- Modes: Cool, Heat, Dry, Fan, Auto
- Vertical or Horizontal Installation
- Rear or Bottom Return
- Outside Air Intake
- Condensate Lift pump shipped with the unit
- Follow Me (senses temperature at handheld remote)
- Heating Setback (46° F Heating Mode)
- Quiet indoor operation
- Aluminum Golden Hydrophilic pre-coated fins

### Controls:

- Wireless Remote Controller included with indoor unit
- Optional Wired Remote Controller (Timer Function)
- Wired Remote Controller KSACN0501AAA (7 Day programmable) included with indoor unit

System	Size	18	
	Indoor Model	DLFSDAH18XAK	
Electrical	Voltage, Phase, Cycle	V/Ph/Hz	208/230-1-60
	Power Supply	Powered from outdoor unit	
	MCA	A.	1.2
Controls	Wireless Remote Controller (°F/°C Convertible)	Standard	
	Wired Remote Controller (°F/°C Convertible)	Standard	
Operating Range	Cooling Indoor DB Min -Max	° F (° C)	63~90 (17~32)
	Heating Indoor DB Min -Max	° F (° C)	32~86 (0~30)
Piping	Pipe Connection Size - Liquid	in (mm)	1/4 (6.35)
	Pipe Connection Size - Suction	in (mm)	1/2 (12.7)

Indoor Coil	Face Area	Sq. Ft.	1.9
	No. Rows		3
	Fins per inch		16
	Circuits		4
Indoor	Unit Width	in (mm)	34.65 (880)
	Unit Height	in (mm)	8.27 (210)
	Unit Depth	in (mm)	26.54 (674)
	Net Weight	lbs (kg)	54 (24.5)
	Number of Fan Speeds		3
	Airflow (lowest to highest)	CFM	300/400/480
	Sound Pressure (lowest to highest)	dB(A)	35/37/39
	Max Static Pressure	In.WG.	0.4
Field Drain Pipe Size O.D.	in (mm)	1 (25.4)	

For Compatibility See Product Data

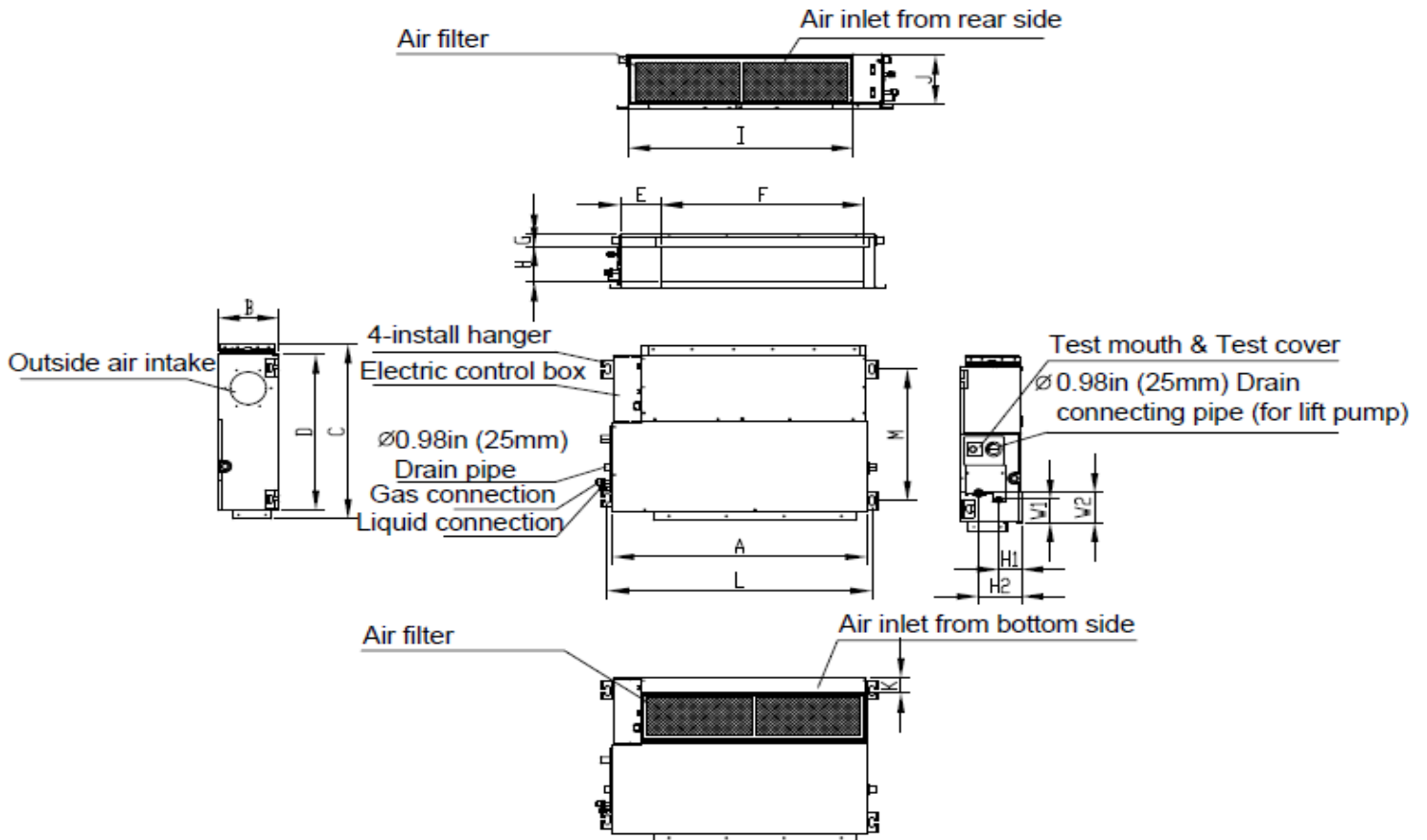
Performance may vary based on the outdoor unit matched to. See compatible outdoor units pages for Performance Data.

## Accessories

KSACN0101AAA	Optional Wired Remote Control with Timer Function
KSACN0501AAA	Shipped with the unit Wired Remote Control 7 day Programmable
KSAIF0401AAA	Wi-Fi™ Kit

# Construction View

Indoor Model: **DLFSDAH18XAK**



		Unit	inch	mm
OUTLINE	DIMENSIONS	A	34.65	880
		B	8.27	210
		C	26.54	674
		D	23.62	600
AIR OUTLET	OPENING SIZE	E	5.51	140
		F	27.8	706
		G	1.97	50
		H	5.35	136
AIR RETURN	OPENING SIZE	I	30.79	782
		J	7.48	190
		K	1.57	40
HANGER	BRACKERS	L	36.22	920
		M	20	508
REFRIGERANT PIPE	LOCATIONS	H1	3.07	78
		H2	5.83	148
		W1	3.46	88
		W2	4.41	112
OPERATING WEIGHT	lb (kg)		54	24.5

