

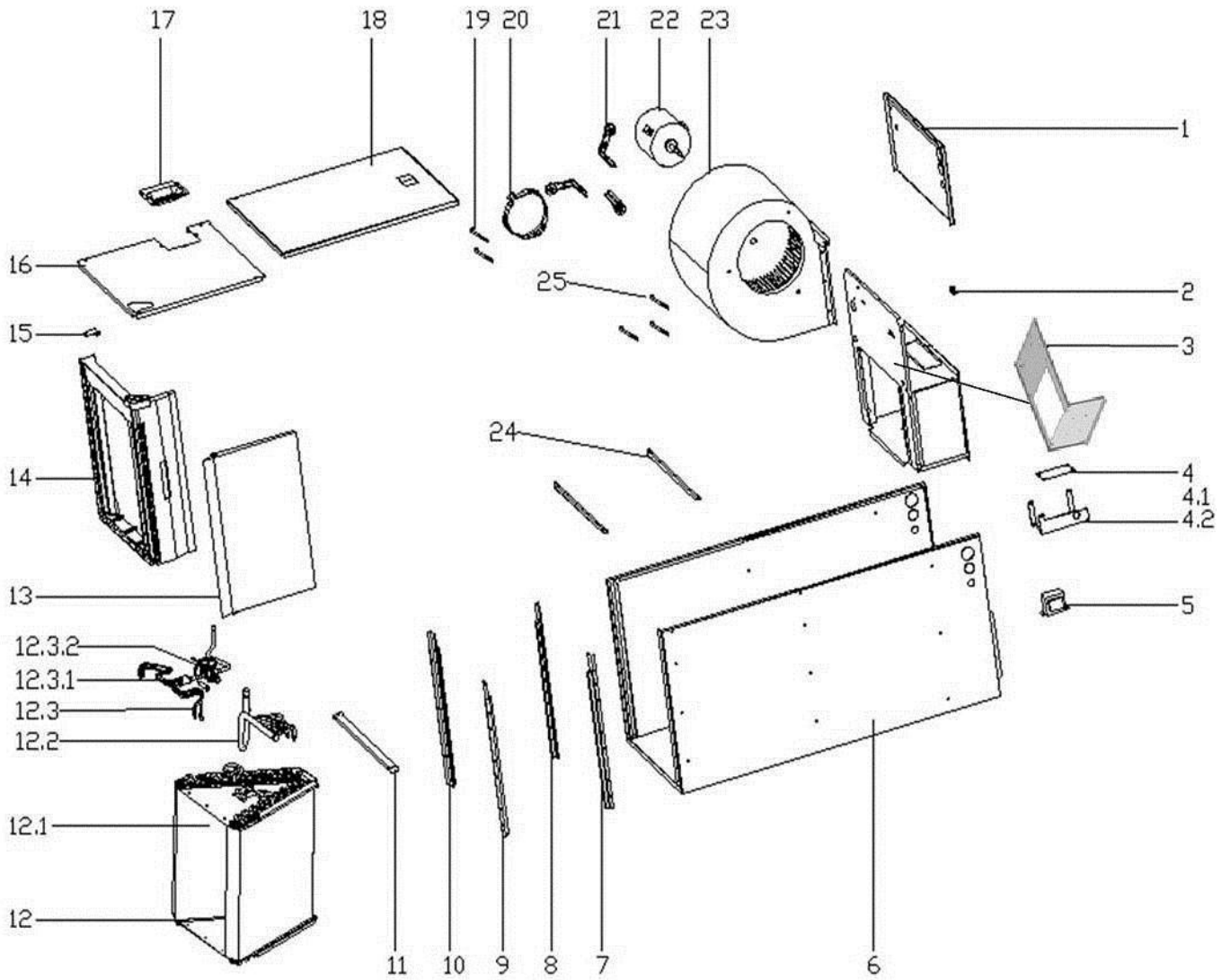


## Parts List for E Series Indoor Units

---

EAHATN-24	2Ton Air Handler
EAHATN-36	3Ton Air Handler
EAHATN-48	4Ton Air Handler
EAHATN-60	5Ton Air Handler





#	Part Name	Quantity	Parts number		
			24	36	48/60
1	Electronic control cover plate	1	230803519	230803519	230803354
2	connecting terminal	1	230803113		
3	Duct components	1	210836947	230803516	230803340
4	E-part box ass'y	1	See 4.1 & 4.2		
4.1	PCB ass'y	1	230904221		
4.2	Electrical Parts support board	1	230803343		
5	Transformer	1	230904118		
6	Base ass'y	1	230803528	230803528	230803344
7	Drainage pan supporter ass'y I	1	230803356		
8	Drainage pan supporter ass' II	1	230803357		
9	Drainage pan supporter ass'y I	1	230803356		

#	Part Name	Quantity	Parts number		
			24	36	48/60
10	Drainage pan supporter ass' II	1	230803357		
11	Cover board	1	230803521	230803521	230803352
12	Evaporator ass'y	1	231235787	231235787	231235558
12.1	Evaporator	2	231235904	231235904	211240381
12.2	Evaporator output pipe ass'y	1	231235905	231235905	231235560
12.3	Evaporator input pipe ass'y	1	231235915	231235915	231235559
12.3.1	Distributor ass'y	1	231235917	231235917	231235612
12.3.2	Thermostatic expansion valve	1	231235928	231235928	231235631
13	Drainage pan II	1	230803532	230803532	230803363
14	Drainage pan I	1	230701545	230701545	230701514
15	Drainage pan clap	2	230803353		
16	Upside board ass'y	1	230803526	230803526	230803346
17	Cover plate ass'y	1	230803365		
18	Downside board ass'y	1	230803524	230803524	230803347
19	water tray brace	2	230803531	230803531	230803364
20	Motor bracket II	1	230803369		
21	Motor bracket I	3	230803368		
22	Brushless DC Motor	1	230904147	230904148	230904170
23	Centrifugal fan	1	210836914	230803112	230803112
24	Supporter ass'y	1	230803522	230803522	230803350
25	Bolt	3	230803564		

©2017-2019 ECOER INC.

3900 Jermantown Rd., Suite 150, Fairfax, VA 22030

Tel: 703-348-2538

[www.ecoer.com](http://www.ecoer.com)